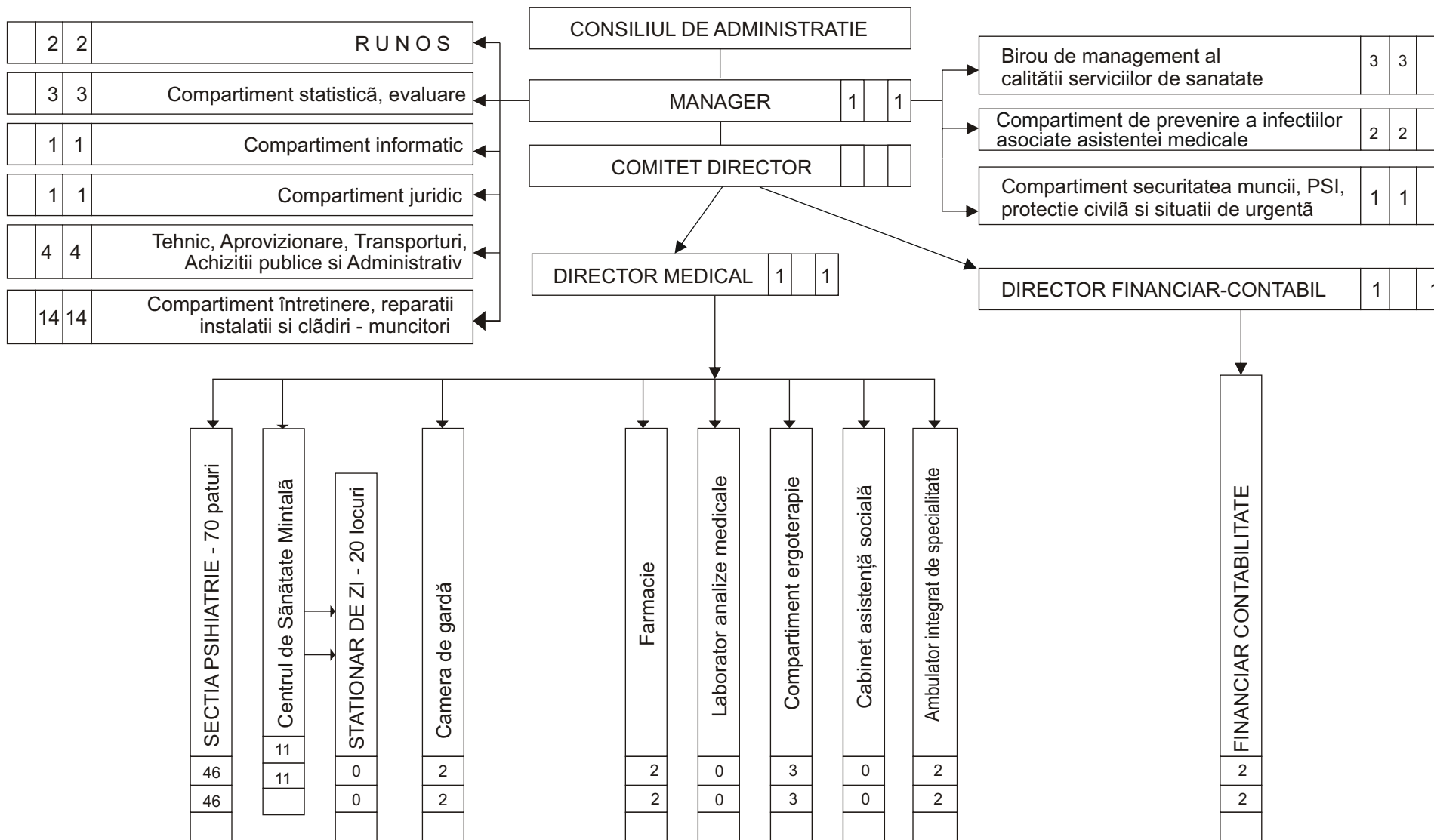


ORGANIGRAMA

SPITALULUI DE PSIHIATRIE CAMPULUNG MOLDOVENESC
01-12-2020



MANAGER,
Dr. **Cristina Luana Zbranca**

DIRECTOR FINANCIAR-CONTABIL,
Ec. **Aurora Rusu Samson**

TOTAL PERSONAL: 102
EXECUTIE: 99
CONDUCERE: 3

COMPARTIMENT RUNOS,
Ec. **Oanea Mihaela**