

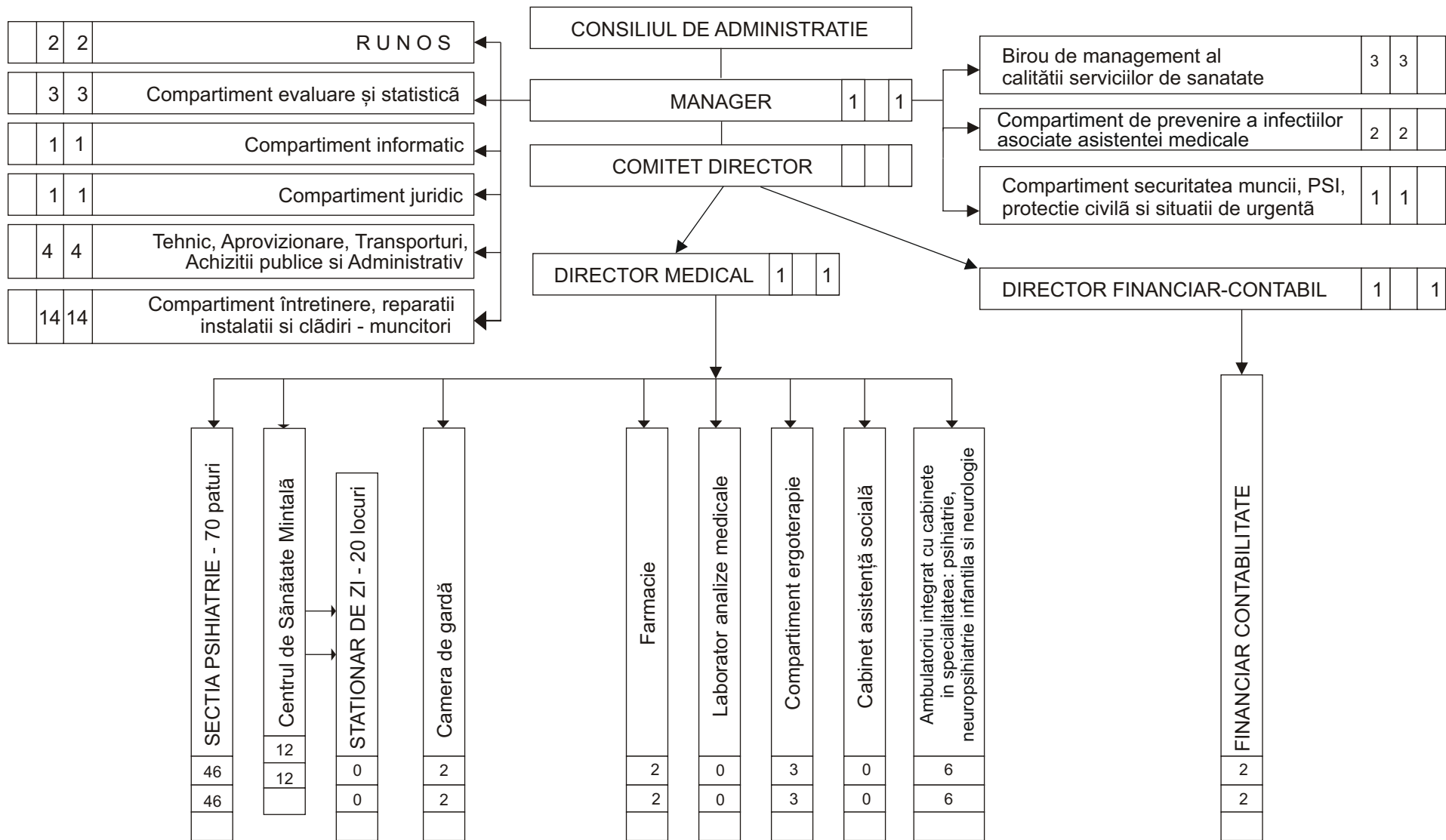
Spitalul de Psihiatrie
Campulung Moldovenesc
Numar paturi: 70
Stationar de zi: 20 locuri

ORGANIGRAMA

SPITALULUI DE PSIHIATRIE CAMPULUNG MOLDOVENESC

01-09-2023

MUNICIPIUL CÂMPULUNG MOLDOVENESC
CONSILIUL LOCAL
ANEXA NR. 1
LA H.C.L..... DIN



MANAGER,
Dr. Cristina Luana Zbranca

DIRECTOR FINANCIAR-CONTABIL,
Ec. Aurora Rusu Samson

TOTAL PERSONAL: 107
EXECUTIE: 104
CONDUCERE: 3

COMPARTIMENT RUNOS,
Ec. Oanea Mihaela